



# Flight Plan & Site Survey

Created using **RPAS Wilco**<sup>®</sup>

Operation Name:	KMAS Goose Lake
Pilot Name:	██████████
Pilot Certificate:	██████████
Flight Start:	December 21, 2023 5:43 PM
Flight End:	December 21, 2023 7:43 PM
Flight Area (Latitude):	50° 34' 55.10" N ( 50.582 )
Flight Area (Longitude):	120° 23' 33.30" W ( -120.393 )
Altitude - Radius:	Alt: 400 ft - Rad: 926.0 m ( 0.5 nm)
Airspace:	UNCONTROLLED
FIR - Contact:	CZVR - 604-586-4500

Please ensure you received all required authorizations prior to flight.

## Disclaimer

This Site Survey was created using RPAS Wilco by AIM Robotics. The flight plan contained is intended only for RPAS flights on the date/time and location specified. The user accepts all responsibility for the accuracy and completeness of the information contained.

For the complete Terms & Conditions, see

<https://rpswilco.com/#/tnc>



## Included

- Site Survey
- Obstacles (if available)
- Nearby Aerodromes
- Canadian Aviation Regulations
- GFA
- Aerodrome Supplements
  - METAR & TAF (if available)
  - NOTAMS
  - CFS

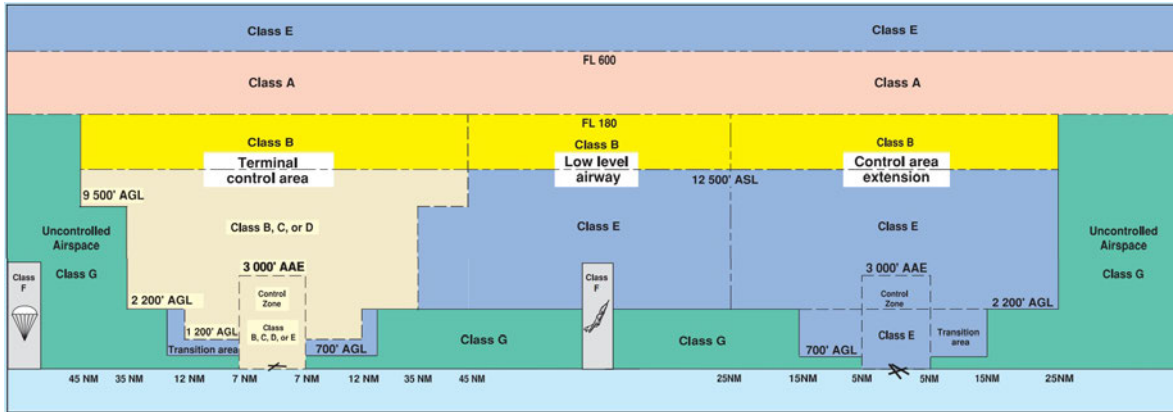
## Flight Map



## MAP Details

	Latitude	Longitude
 <b>MODEL</b>	50° 34' 55.10" N ( 50.582 )	120° 23' 33.30" W ( -120.393 )
 <b>Pilot</b>	50° 34' 58.70" N ( 50.583 )	120° 23' 36.90" W ( -120.3936 )

## Airspace Classification



## Overlying Airspaces

Class	Name	Floor	Ceiling
B	T799 Airway	12500MSL	18000MSL
E	T799 Airway	2200AGL	12500MSL
B	T650 Airway	12500MSL	18000MSL
E	T650 Airway	2200AGL	12500MSL
E	T695 Airway	2200AGL	12500MSL
B	T695 Airway	12500MSL	18000MSL
B	T789 Airway MEA: 12700MSL	12700MSL	18000MSL
E	T789 Airway MEA: 12700MSL	2200AGL	12700MSL
E	Kamloops, BC TA	700AGL	12500MSL
B	Kamloops, BC TA	12500MSL	18000MSL
B	T611 Airway	12500MSL	18000MSL
E	T611 Airway	2200AGL	12500MSL
E	T687 Airway	2200AGL	12500MSL
B	T687 Airway	12500MSL	18000MSL
B	Kamloops, BC TA	12500MSL	18000MSL
E	Kamloops, BC TA	1600AGL	12500MSL
E	Williams Lake, BC CAE	8000MSL	12500MSL
B	Williams Lake, BC CAE	12500MSL	18000MSL

## Nearest Aerodromes & Distance from Operation

KAMLOOPS (CAH7 WATERDROME Reg)	Lat: 50.7 Long: 120.433	13.43 KM	7.25 NM
KAMLOOPS (CYKA AERODROME Cert)	Lat: 50.703 Long: 120.448	14.014 KM	7.57 NM
KAMLOOPS (ROYAL INLAND HOSPITAL) (CBC4 HELIPORT Cert)	Lat: 50.669 Long: 120.333	10.55 KM	5.7 NM

# Canadian Aviation Regulations

## Division III — General Operating and Flight Rules

For full listing please visit <https://laws-lois.justice.gc.ca/eng/regulations/SOR-96-433/FullText.html#s-901.27>

### Visual Line-of-sight

- **901.11 (1)** Subject to subsection (2) no pilot shall operate a remotely piloted aircraft system unless the pilot or a visual observer has the aircraft in visual line-of-sight at all times during flight.
- **(2)** A pilot may operate a remotely piloted aircraft system without the pilot or a visual observer having the aircraft in visual line-of-sight if the operation is conducted in accordance with a special flight operations certificate — RPAS issued under section 903.03.

### Procedures

- **901.23 (1)** No pilot shall operate a remotely piloted aircraft system unless the following procedures are established:
  - **(a)** normal operating procedures, including pre-flight, take-off, launch, approach, landing and recovery procedures; and
  - **(b)** emergency procedures, including with respect to
    - **(i)** a control station failure,
    - **(ii)** an equipment failure,
    - **(iii)** a failure of the remotely piloted aircraft,
    - **(iv)** a loss of the command and control link,
    - **(v)** a fly-away, and
    - **(vi)** flight termination.
- **(2)** If the manufacturer of the remotely piloted aircraft system provides instructions with respect to the topics referred to in paragraphs (1)(a) and (b), the procedures established under subsection (1) shall reflect those instructions.
- **(3)** No pilot shall conduct the take-off or launch of a remotely piloted aircraft unless the procedures referred to in subsection (1) are reviewed before the flight by, and are immediately available to, each crew member.
- **(4)** No pilot shall operate a remotely piloted aircraft system unless the operation is conducted in accordance with the procedures referred to in subsection (1).

### Site Survey

**901.27** No pilot shall operate a remotely piloted aircraft system unless, before commencing operations, they determine that the site for take-off, launch, landing or recovery is suitable for the proposed operation by conducting a site survey that takes into account the following factors:

- **(a)** the boundaries of the area of operation;
- **(b)** the type of airspace and the applicable regulatory requirements;
- **(c)** the altitudes and routes to be used on the approach to and departure from the area of operation;
- **(d)** the proximity of manned aircraft operations;
- **(e)** the proximity of aerodromes, airports and heliports;
- **(f)** the location and height of obstacles, including wires, masts, buildings, cell phone towers and wind turbines;
- **(g)** the predominant weather and environmental conditions for the area of operation; and
- **(h)** the horizontal distances from persons not involved in the operation.

### Operations at or in the Vicinity of an Aerodrome, Airport or Heliport

- **901.47 (1)** No pilot shall operate a remotely piloted aircraft at or near an aerodrome that is listed in the *Canada Flight Supplement* or the *Water Aerodrome Supplement* in a manner that could interfere with an aircraft operating in the established traffic pattern.
- **(2)** Subject to section 901.73 no pilot shall operate a remotely piloted aircraft at a distance of less than
  - **(a)** three nautical miles from the centre of an airport; and
  - **(b)** one nautical mile from the centre of a heliport.
- **(3)** No pilot shall operate a remotely piloted aircraft at a distance of less than three nautical miles from the centre of an aerodrome operated under the authority of the Minister of National Defence unless the operation is conducted in accordance with a special flight operations certificate — RPAS issued under section 903.03.

### Records

- **901.48 (1)** Every owner of a remotely piloted aircraft system shall keep the following records:
  - **(a)** a record containing the names of the pilots and other crew members who are involved in each flight and, in respect of the system, the time of each flight or series of flights and
  - **(b)** a record containing the particulars of any mandatory action and any other maintenance action, modification or repair performed on the system, including
    - **(i)** the names of the persons who performed them,
    - **(ii)** the dates they were undertaken,
    - **(iii)** in the case of a modification, the manufacturer, model and a description of the part or equipment installed to modify the system, and
    - **(iv)** if applicable any instructions provided to complete the work.
- **(2)** Every owner of a remotely piloted aircraft system shall ensure that the records referred to in subsection (1) are made available to the Minister on request and are retained for a period of
  - **(a)** in the case of the records referred to in paragraph (1)(a), 12 months after the day on which they are created; and
  - **(b)** in the case of the records referred to in paragraph (1)(b), 24 months after the day on which they are created.
- **(3)** Every owner of a remotely piloted aircraft system who transfers ownership of the system to another person shall, at the time of transfer, also deliver to that person all of the records referred to in paragraph (1)(b).

# CANADA WATER AERODROME SUPPLEMENT

Effective 0901Z 20 April 2023 to 0901Z 21 March 2024

AERODROME/FACILITY DIRECTORY B87

## KAMLOOPS BC

CAH7

<b>REF</b>	N50 42 W120 26 3WNW 17°E (2013) UTC-8(7) Elev 1129' A5004	
<b>OPR</b>	Kamloops Aprt Ltd 250-376-3613 Reg	
<b>PF</b>	A-1,2,3,6 C-4,5 at adj land A/D	
<b>CUST</b>	AOE/15 16-08Z† 888-226-7277	
<b>FLT PLN</b>	<b>FIC</b> Kamloops 866-WXBRIEF (Toll free within Canada) or 866-541-4101 (Toll free within Canada & USA)	
<b>SERVICES</b>	Float cart chg. Call out chg may be levied for one or more svcs. Mountaineer Svc 250-376-3800, Spring Avn 250-554-2616.	
<b>FUEL</b>	100LL, JA-1 avbl at adj A/D, acft removal fr water rqrd, refuelling at dock proh. Shell 250-376-7633 or 250-819-9345 PN. Executive Flight Centre 250-376-9069.	
<b>OIL S</b>	80, 100, 120 1 (ltd), 2, 3 (at adj land A/D), 5	
<b>A/D DATA</b>	Open water Apr-mid Nov. Depth 12', sand bottom, current 5 kt. Spring freshets raise water level by 12'. Buoys, ramp & beach.	
<b>COMM</b>	<b>RADIO</b> 125.7 297.0 (E) (emerg only 250-376-7941) <b>RCO</b> Pacific rdo 123.375 (FISE) 126.7 (bcst) <b>MF</b> rdo 125.7 5NM 4100 ASL centred on land A/D (CAR 602 98)	
<b>PRO</b>	Seaplane conform to land A/D t/c pattern: Rgt hand circuits Rwy 04, 22 & 26 (CAR 602.96). E departures climb to 2200 ASL or river junction before turning N.	
<b>CAUTION</b>	Dur low water sand bars hazardous; oprg channel swings from N side of river E of dock, to S side W of dock. Adj land A/D. Class "E" CZ to 5NM radius, 4100 ASL (2900 AGL).	

## KAMLOOPS FIC - RCO

Cross reference to PACIFIC RADIO - RCO (New)

## KAMLOOPS FSS - RCO

Victoria 119.7 (RAAS) 08-14Z† (N48 38 W123 25)

# CANADA WATER AERODROME SUPPLEMENT

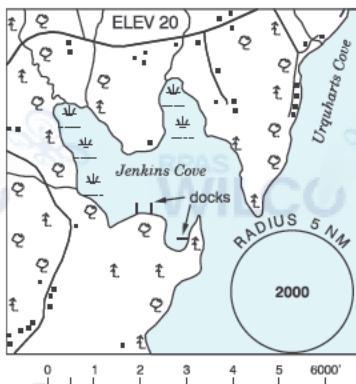
Effective 0901Z 20 April 2023 to 0901Z 21 March 2024

## B88 AERODROME/FACILITY DIRECTORY

### KARS / JENKINS COVE NB

CJO3

<b>REF</b>	N45 35 38 W65 57 25 1.3ESE 17°W (2017) UTC-4(3) Elev 20' A5003
<b>OPR</b>	Richard Pattie 506-485-1122 Reg
<b>PF</b>	B-1 C-2,5
<b>FLT PLN</b>	
<b>FIG</b>	London 866-WXBRIEF (Toll free w/ hin Canada) or 866-541-4104 (Toll free within Canada & USA)
<b>ACC</b>	(IFR only) Moncton 506-867-7177 or 866-480-8200.
<b>SERVICES</b>	
<b>S</b>	5



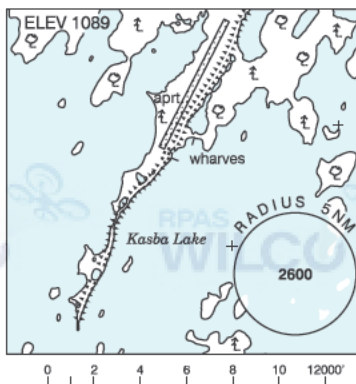
<b>A/D DATA</b>	Open water May-Dec
-----------------	--------------------

<b>COMM</b>	
<b>ATF</b>	tfc 123.05 5NM 3000 ASL

### KASBA LAKE NT

CJP5

<b>REF</b>	N60 17 W102 31 7°E (2013) UTC-6(5) Elev 1089' A5024 A5031
<b>OPR</b>	Kasba Lake Lodge 250-248-3572 Reg PPR
<b>PF</b>	B-1,2,5 PN Oprg Jun15-Sep 1
<b>FLT PLN</b>	
<b>FIG</b>	Edmonton 866-WXBRIEF (Toll free within Canada) or 866-541-4102 (Toll free within Canada & USA)
<b>SERVICES</b>	
<b>FUEL</b>	100LL, JA Prior arng thru Opr Jun 15 - Aug 15
<b>A/D DATA</b>	Open water Jun-Oct. Sand beach.



<b>COMM</b>	
<b>ATF</b>	UNICOM ltd hrs O/T tfc 122.8 5NM 4200 ASL

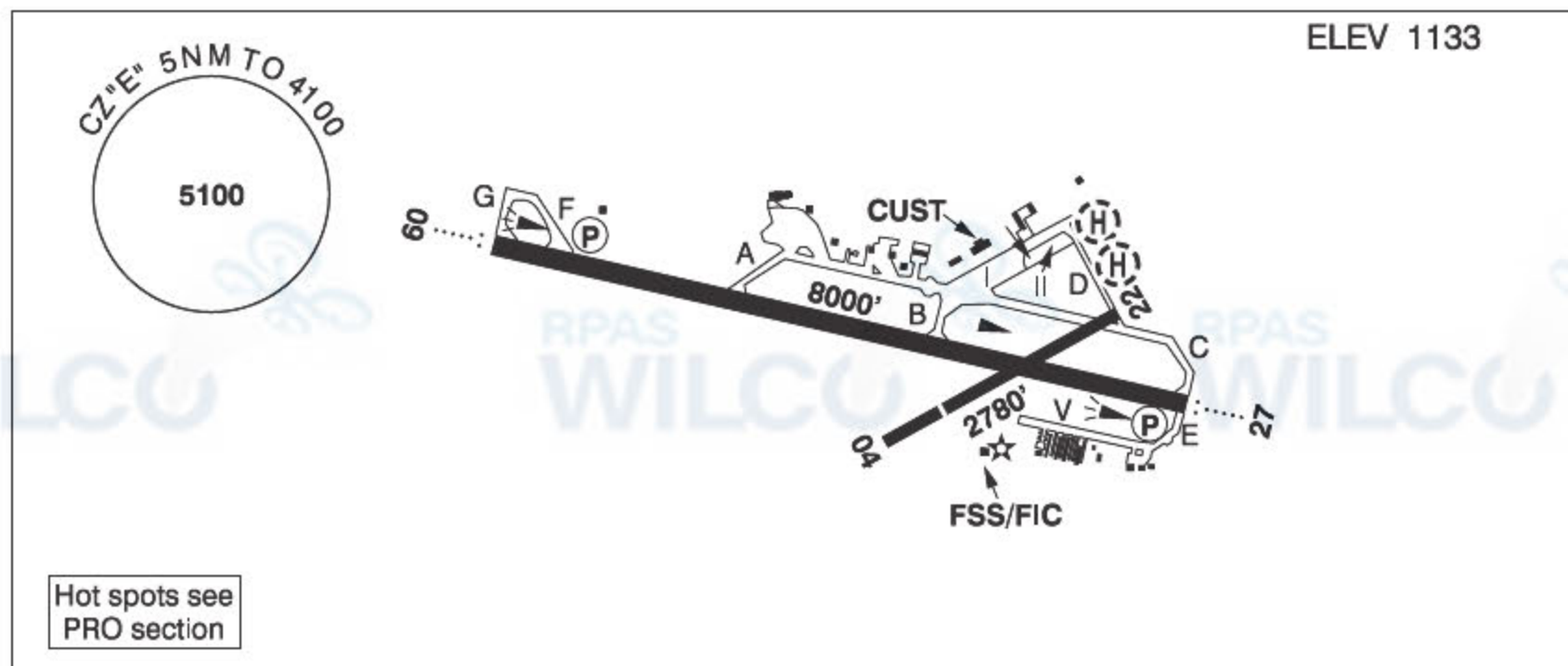
## BRITISH COLUMBIA

## AERODROME/FACILITY DIRECTORY

## KAMLOOPS BC

CYKA

ELEV 1133



<b>REF</b>	N50 42 09 W120 26 55 5WNW 16°E (2016) UTC-8(7) Elev 1133' A5004 LO2 HI3 CAP RCAP
<b>OPR</b>	Kamloops Aprt Ltd 250-376-3613 Cert
<b>PF</b>	A-1,2,3,6 C-4,5
<b>CUST</b>	AOE/15 1630-0800Z‡ AOE/30 1630-0030Z‡ Mon-Fri exc hols 888-226-7277
<b>FLT PLN</b>	
<b>FIC</b>	Kamloops 866-WXBRIEF (Toll free within Canada) or 866-541-4101 (Toll free within Canada & USA) or 250-376-8392
<b>WX</b>	METAR H24. TAF H24, issue times: 01, 07, 13, 19Z.
<b>SERVICES</b>	Call out chg may be levied for one or more svcs
<b>FUEL</b>	100LL, JA-1 (FSII avbl)
<b>OIL</b>	80, 100, 120
<b>S</b>	1 (ltd), 2,3,4,5,6 (ltd)
<b>ARFF</b>	DESIGNATED CAT 6 14-08Z‡, O/T 2 hr PN 250-376-3233 call out chg
<b>PVT ADV</b>	Shell 123.0 250-376-7633; Executive Flight Centre 122.85 250-376-9069
<b>MIL CON</b>	Executive Flight Centre Fuel 250-376-9069
<b>RWY DATA</b>	Rwy 09(087°)/27(267°) 8000x148 ASPH Rwy 04(045°)/22(225°) 2780x49 ASPH Thld 04 displ 689'.
<b>RWY CERT</b>	Rwy 04/22 AGN II Rwy 09/27 AGN IIIB
<b>TWY CERT</b>	Twy: D, E AGN II
<b>TWY</b>	Twy A, no vehicle ctl first 600' W of Apron I. Twy E: Unlgtd
<b>APRON</b>	Apron 1: Uncontrolled, avbl to sked pax flt only. All acft must yield to acft in pushback from ATB. Prkg fees. Apron II: Uncontrolled, avbl for transient and itinerant prkg. All acft must yield to acft in pushback from ATB. Pilot/pax access via groundside Gate 10 only; no access/egress permitted via ATB. Prkg fees. Apron V: Uncontrolled, PPR for prkg on or within 25' of aprn.
<b>RCR</b>	FSS Win maint 13-08Z‡ O/T 2 hrs PN cost recovery. CRFI, PLR/PCN.
<b>LIGHTING</b>	09-AO(TE ME) P2, 27-AO(TE ME) P2 ARCAL-125.7 type K avbl when FSS clsd PAPI limitation/restriction. PAPI Rwy 09 to be used only within 4NM of thld; PAPI Rwy 27 to be used only within 4NM of thld. Twy D RR.

## BRITISH COLUMBIA

## AERODROME/FACILITY DIRECTORY

## KAMLOOPS BC (Cont'd)

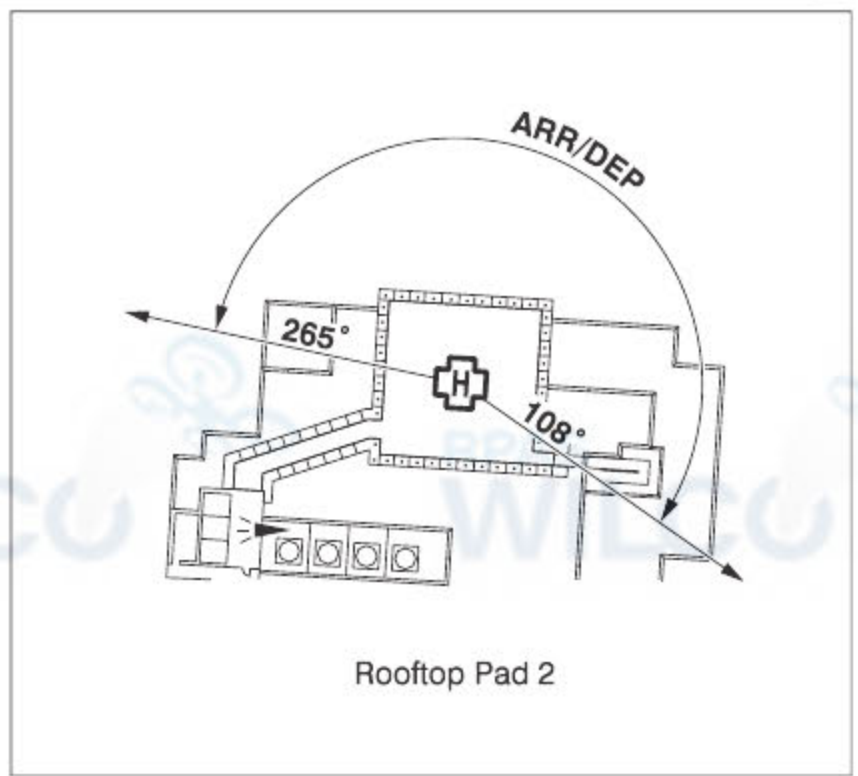
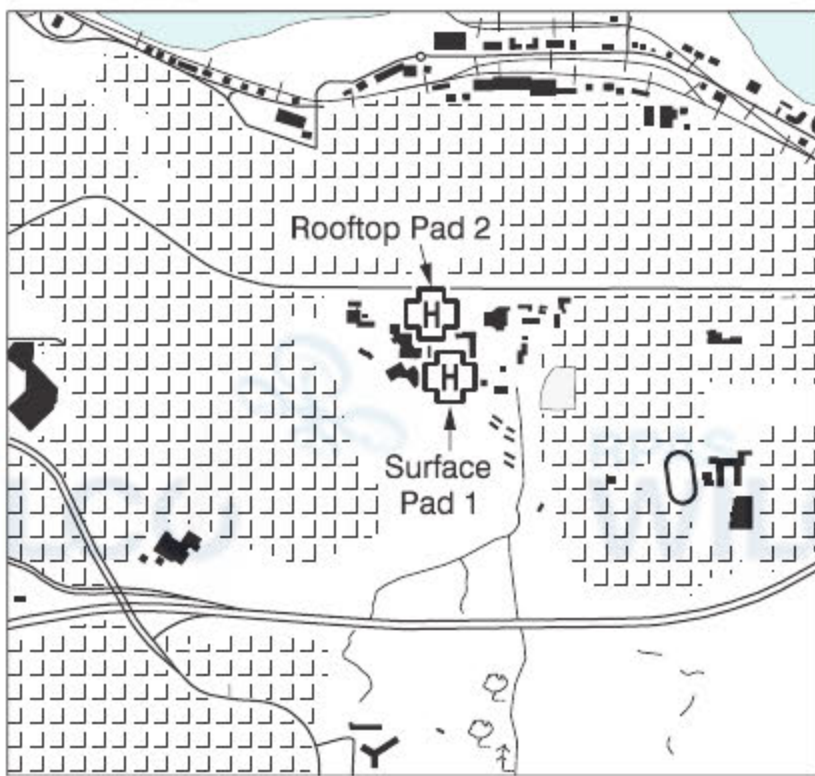
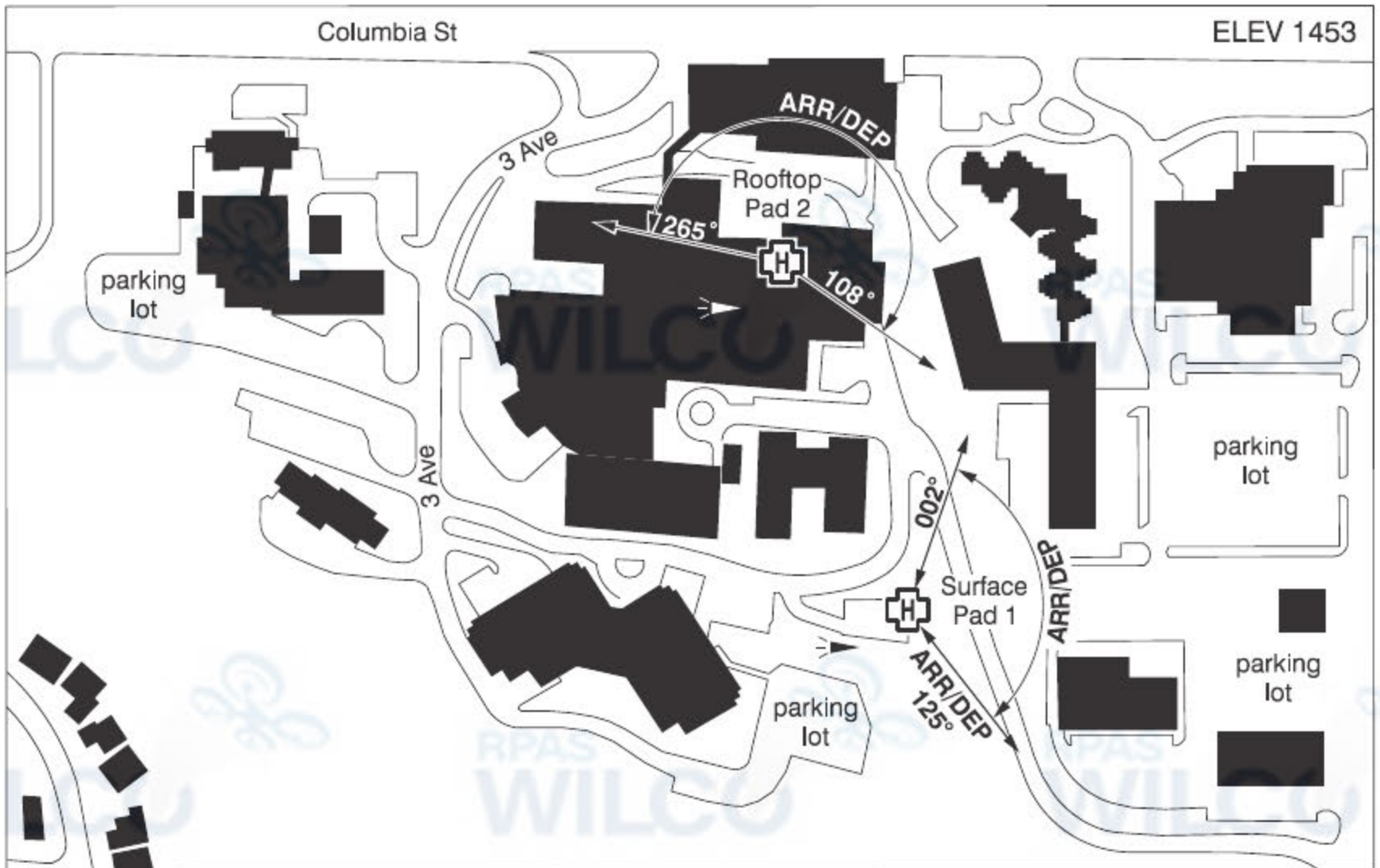
CYKA

<b>COMM</b>	
<b>RADIO</b>	125.7 PTC avbl (V) (emerg only 250-376-7941)
<b>RCO</b>	Pacific rdo 123.375 (FISE) 126.7 (bcst)
<b>CLNC DEL</b>	121.9 PTC avbl ltd hrs
<b>MF</b>	rdo 125.7 5NM 4100 ASL (CAR 602.98)
<b>PAL</b>	Vancouver Ctr 132.35 133.5 134.4 236.0
<b>NAV</b>	
<b>DME</b>	IKA 109.3 Ch 30 N50 42 14 W120 27 41 (1136')
<b>ILS</b>	IKA 109.3 (Rwy 09)
<b>LOC</b>	IPP 109.9 (Rwy 27) reliable only within 10° of centreline.
<b>PRO</b>	<p>Pilots should refer to Canadian Airport Charts (CAC) to obtain details on established hot spots, prior to operating on maneuvering areas. CAC are available for free on the NAV CANADA website.</p> <p>Day: rgt hand circuits Rwy 04, 22 &amp; 27 (CAR 602.96). Night: follow VTPC night circuit pro. Tkof and ldg in grass adj rwys by fixed-wing acft not auth.</p>
<b>CAUTION</b>	<p>Only pilots familiar with lcl terrain should use this aprt dur hrs of darkness. Ngt ops not recommended unless all 6 hazard beacons are oprg. Hi terrain reduces operational length of Rwy 09 and 27 PAPI.</p> <p>Painted &amp; lgtd twr 1253 ASL (128 AGL) aprx 250' beyond displaced Thld 04 and 2710' NW rwy centreline.</p> <p>Fuel facility (tanks 80 AGL) aprx 0.5NM NE A/D; no low alt heli ops.</p>



**KAMLOOPS (ROYAL INLAND HOSP) BC (Heli)**

**CBC4**



<b>REF</b>	N50 40 09 W120 19 59 Adj 17°E (2012) UTC-8(7) Elev 1453' A5004
<b>OPR</b>	Interior Health Authority 250-374-5111 Cert PPR
<b>PF</b>	B-1,2,4 C-3,5,6
<b>FLT PLN</b>	
<b>FIC</b>	Kamloops 866-WXBRIEF (Toll free within Canada) or 866-541-4101 (Toll free within Canada & USA) or 250-376-8392
<b>HELI DATA</b>	Surface Pad 1: FATO 86' dia elevated TLOF 57' dia CONC Safety Area 115' dia elevated 17,000 lbs Max heli overall length 57.4' (CAR 602.96) Rooftop Pad 2: FATO 86' x 86' non-supporting TLOF 71' x 71' CONC Safety Area 115' x 115' 18,000 lbs Max heli overall length 57.4' (CAR 602.96)
<b>RCR</b>	Opr
<b>LIGHTING</b>	Surface Pad 1: RY(LO) green ARCAL-125.7 type J Rooftop Pad 2: RW(ME) green LED ARCAL-122.9 type K

## BRITISH COLUMBIA

## AERODROME/FACILITY DIRECTORY

## KAMLOOPS (ROYAL INLAND HOSP) BC (Heli) (Cont'd)

CBC4

<b>COMM</b>	Kamloops rdo 125.7 5NM 4100 ASL centered on Kamloops aprt (CAR 602.98). Hosp Security PEPCORD1 148.655 FM 3 min PN
<b>MF</b> <b>A/G</b>	
<b>PRO</b>	Surface Pad 1 Arr/dep 125° fr heli, (H3) (CAR 602.96). Arr/dep 002° to 125° fr heli, (H1) (CAR 602.96). Rooftop Pad 2 Arr/dep 265° to 108° fr heli (H1) (CAR 602.96).
<b>CAUTION</b>	Unlgt'd embankment to 40', adj SE. Marked & lgt'd hosp penthouse elevator aprx 30' W of rooftop pad safety area.